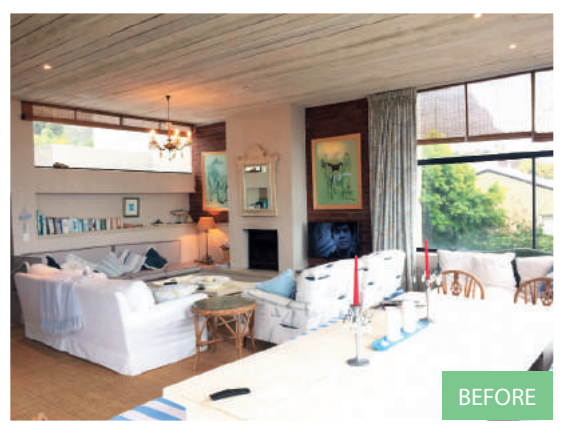


# *On the* **BRIGHT SIDE**

This laid-back holiday home was transformed into a tropical haven thanks to a bold colour scheme and a few modern touches



## UPDATED HOLIDAY HOME



### WHO LIVES HERE

Sue Lederle, who spends holidays here with her children, Tammy and Dean, and their families.

### THE HOUSE

A three-level, six-bedroom house with two self-contained wings on the second storey, accessed via separate staircases. ▷



"I wanted to enhance the fireplace with a decorative feature, so I used small tiles from Moroccan Warehouse to clad the supporting slab," explains owner Sue Lederle. The strip window, niche and built-in seating in the **living space** are all original features of this 1970's house.



BEFORE

“I grew up in Hermanus and loved every minute of my childhood, so it was always a dream to have my own holiday home here,” says Sue Lederle of Lederle Holdings, a design and travel consultancy in Cape Town. The opportunity presented itself in

1998 when she came across a '70s-style two-storey house in Voelklip, a suburb clinging to the Kleinrivier Mountains above Hermanus. “It had a rather unassuming façade, but I was intrigued. Once inside, I fell in love with the sea and mountain views,” she recalls.



Sue says the home grew as her children's circle of friends did. In 2009, she embarked on a major extension – two separate second-storey wings, each comprising a bedroom, bathroom, living area and kitchenette. “The idea was for the adults to have some peace ▷



**THIS SPREAD, CLOCKWISE FROM LEFT:**

● Once a neutral space featuring pale blue cabinetry, the **kitchen and breakfast room** were completely transformed using a vibrant green and pink colour scheme. “We liked the idea of continuing a slightly rustic, textured theme in some of the spaces, and this was introduced here with a sisal rug and a cane light fitting,” says Sue’s daughter, Tammy. ● A reading nook in one corner of the open-plan **living space** takes advantage of the sea views. The shutters are from Plantation Shutters. ● The wallpaper used in the **kitchen** is from Hertex and the wooden stools were found online.





*“The proportions of the space happily accommodate the bold colours, and their impact is balanced by the backdrop of neutral hues.”*



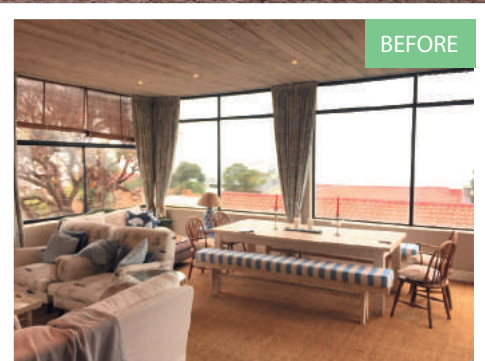
and quiet in their own private spaces. Of course, that never happened. It was always far more fun to spend our time with the kids,” Sue laughs.

In addition to the new build, the existing brick floors were overlaid with concrete screed and hemp carpeting was

installed in the living and dining areas, as well as some bedrooms. Against the existing foundation of bagged white walls and wooden ceilings, Sue established a laid-back beach house look using furniture in a neutral palette and adding touches of blue. “The style was

so easy to live with, but it did eventually date. After 10 years, it was time for a change.”

Inspired by a painting of Frida Kahlo that she had bought on a whim, Sue chose vibrant colours as the base for her new scheme. Assisting her ▷



**THIS SPREAD, CLOCKWISE FROM TOP LEFT:** ● The first renovation 10 years ago involved covering the existing brick floors with concrete screed. The staircase leads from the open-plan living and dining area to one of the second-storey wings. ● “Hemp carpeting is durable and so easy to maintain. It’s also lovely to walk on barefoot in summer,” says Sue. Three pendant lights from Amatuli were used to define the **dining area** in the open-plan living space. The dining table and benches are from Decorwoods. ● “This dresser was found at a second-hand store and makes a perfect drinks cabinet,” says Sue.



with the transformation was her daughter Tammy Holmes, who followed in her mother's footsteps and became a decorator. She is based in Jo'burg and owns Ivy Décor & Design.



In the living/dining room, two exposed brick walls were plastered and painted an inky blue, while the mantel wall was coated in a lush green. "The proportions of the space happily accommodate the bold colours,

and their impact is balanced by the backdrop of neutral hues in the flooring and furnishings," Tammy explains.

To establish rhythm and harmony across the home's three levels, shades of blue and green were repeated. In the kitchen, Plascon's Racing Green gives new life to the previously pale blue cupboards, while Malawian chairs and a server in fuchsia pink bring balance to the adjoining breakfast room. A banana-leaf pattern wallpaper in the kitchen pulls the two spaces together with tropical flair.

Most of the traditional rattan and painted wood furniture gave way to

more modern pieces. In the living area, a coffee table with a grey stone top and gilt base adds a glamorous element, while a new dining table and benches were chosen for their simple lines and natural wood finish. Crystal chandeliers were replaced with rattan pendant lights, and their textural quality is echoed in some of the bedrooms with bedside lights in similar designs.

"We each brought our own style to the spaces and we couldn't be more pleased with the result. It's an incredibly happy and uplifting home to spend holidays in," say Sue and Tammy.  

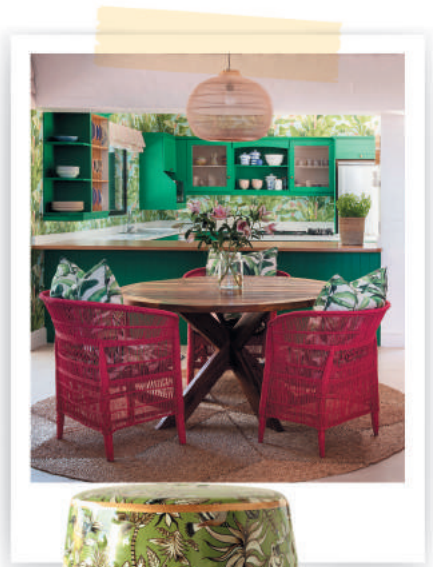
**ABOVE:** "We bricked up the existing window and had this wallpaper custom printed using an image that suited the tropical theme of the room. In addition to the colours used, each **bedroom** has been given a unique stamp with a headboard in an unusual shape," says Tammy. The fabric used to upholster the bed is from Hertex and the bedside tables are from Block & Chisel.



Tangiers **light fitting**, R1 199, The Lighting Warehouse.

## Get the look

Make an impact with bright colours and natural textures



Red Malawian **chair**, R1 400, Sugar Apple.



Jungle design **garden stool**, R1 840, NetDÉcor.



Macaw **scatter**, R460, NetDÉcor.



Pierre Frey **wallpaper** in Pachira blanc, R3 989/m, Mavromac & Gatehouse.



Anton round **table**, R36 995, La Grange Interiors.



**THIS PAGE, FROM TOP TO BOTTOM:** ● “The minaret shape of the headboards in this **guest bedroom** was inspired by Moroccan and Indian interiors, which I love,” Sue explains. ● The simple vanity in one of the second-storey bathrooms was inspired by the bagged wall finish of the original house. Bought at a market in France, the wall sconces enhance the shabby chic look.

**SOURCES** Amatuli [amatuli.co.za](http://amatuli.co.za) **Block & Chisel** [blockandchisel.co.za](http://blockandchisel.co.za) **Decorwoods** [decorwoods.co.za](http://decorwoods.co.za) **Hertex** [hertex.co.za](http://hertex.co.za) **Ivy Décor & Design** [ivydecor.co.za](http://ivydecor.co.za) **La Grange Interiors** [lagrangeinteriors.co.za](http://lagrangeinteriors.co.za) **Lederle Holdings** [lederleholdings.co.za](http://lederleholdings.co.za) **Mavromac & Gatehouse** [mavromacandthegatehouse.co.za](http://mavromacandthegatehouse.co.za) **Moroccan Warehouse** 021 461 8318 **NetDÉcor** [netdecor.co.za](http://netdecor.co.za) **Plantation Shutters** [plantation.co.za](http://plantation.co.za) **Plascon** [plascon.com](http://plascon.com) **Sugar Apple** [sugarapple.co.za](http://sugarapple.co.za) **The Lighting Warehouse** [lightingwarehouse.co.za](http://lightingwarehouse.co.za)